



British Distance Summer Champs
& The Fife Biathloppet - 2026



Fife Cycle Park 25th & 26th July

INVITATION



Dear athletes,

It is with great honour and pleasure that the BBU invites you to the 2026 Nordic Summer Distance Championships and the third and final Biathloppet of the 2026 BBU Laser Race Series. Laser Rifles gives us the opportunity to introduce the sport of biathlon to a new group of athletes in a safe and engaging environment. The event will include biathlon running and roller-skiing races, as well as the distance Nordic roller-skiing races, with athletes able to participate in one or all disciplines according to their personal goals and sporting background, with results contributing to the BBU Laser Race Series and also the awarding of National titles. This invitation outlines the key points of the event, for the full rules of the Laser Race Series please visit our website - www.britishbiathlon.com

A1. VENUE

The Fife Cycle Park - <https://active.fife.scot/locations/cycle-park/the-circuit>

A2. ADDRESS

Glencraig, Lochgelly KY5 8AA

A3. ORGANISATION

The British Biathlon Union will be the event organisers

A4. ORGANISING COMMITTEE

Chief of competition Carl Carrier
Competition Secretary Elizabeth Winfield



Registered in England & Wales No. 03270191
Registered Office: Kings Arms Vaults, Watton, Brecon, Powys, Wales, LD3 7EF
info@britishbiathlon.com • www.britishbiathlon.com



A5. LOGISTICS

There is plenty of car parking at the cycle park and there is free entry to the café and changing rooms.

A6. TRAVEL

Individuals can travel directly to the cycle park using the above address. There are good bus and train links; Lochgelly Rail Station is on the 'Fife Circle' line. You can plan your journey with [Traveline Scotland](#)

A7. AIRPORTS

Edinburgh Airport is only 22 miles away. Aberdeen Airport is 100 miles away.

A8. LIABILITY & INSURANCE

Any competitor with BBU membership - <https://www.britishbiathlon.com/product/bbu-full-member/> - will have the appropriate insurance cover for this event, for those who are not BBU members and do not have the appropriate liability insurance through membership of their Home Nations governing body, an additional £3 will be added to your entry fee.

A9. RACE ENTRY

Where possible, are to be made via the website as well as registrations on the day by cash or card. By entering online you also have an increased chance of being able to use roller-skis and boots from our limited pool of equipment.

A10. RIFLES AND AMMUNITION

Rifles - The Eco Aims laser rifles will be used for this competition. These rifles are eye safe and can be used by left and right-handed firers. The rifles will have slight variations in sizing to try and accommodate body size.
Targets - The Eco Aims targets will be used and will be set to biathlon stand for prone and stand shooting for all races to offset the lack of precise zeroing and set at a distance of 10 meters from the firing point.

A11. BRITISH DISTANCE SUMMER CHAMPIONSHIPS

The 2026 British Summer Distance Championships will take place over two days and two disciplines. Race 1 will be an individual classic time trial, with distances relevant to each age group. Race 2 will be a free technique pursuit, based on the results of Race 1. The finishing places in the pursuit will determine the overall finishing places of the Summer Championships.

A12. LASER SERIES LEAGUE

This year, an U17 & Masters age categories will be introduced. The Laser Series league is based on an athlete's two best running and two best skiing results from the three Biathloppets. There will also be a separate OPEN category in the running biathlon only where age and gender will be offset to identify the best performance of the day and the winner will be awarded the coveted Biathlon Boss cap.

A13. WHATSAPP GROUP

A special WhatsApp group has been set up which will provide specific information for this stage of the series including updates, start lists and results...

Please use this QR code to join the group.



B1. PROGRAMME

Day	Time	Event	Details	Note
1	09.00	Cycling centre opens for competitors to use track (certain sections will be closed for coaching novices during the morning)		
	10.30	Race #1	U10 - 1.65k	1 loop
		Nordic Time Trial	U12/U14 - 3.3k	2 loops
		Classic	U16/U18 - 6.6k	4 loops
		Race starts	Senior-Super Vet - 9.9k	6 loops
	12.45	Confirmation of TT results and start places for the Pursuit race No prize-giving for this race, as it is the first of two races in the event.		
	13.00	Shooting training	Anyone who is interested in biathlon is welcome to have some coached training by our British coaches/athletes for free	
	14.00	Range open for zeroing	Competitors are allowed to try shooting from any rifle.	All rifles will have been zeroed by a single BBU coach
	14.30	Biathlon	Children - 3 x 1k	Children shoot prone, prone
Roller-ski race starts		U17/U19 - 3 x 1.65k U21-Masters - 3 x 2.2k		
16.30	Prize giving			
17.00	Day 1 finishes	Centre closes		
2	08.30	Cycling centre opens to competitors		Running course open for recce
	09.00	Race #2	U10 - 1.65k	1 loop
		Nordic Pursuit	U12/U14 - 3.3k	2 loops
		Free Technique	U16/U18 - 6.6k	4 loops
		race starts	Senior-Super Vet - 9.9k	6 loops
	12.00	Prize giving		
	12.15	Shooting training	Anyone who is interested in biathlon is welcome to have some coached training by our British coaches/athletes for free	
	13.00	Range open for zeroing	Competitors are allowed to try shooting from any rifle.	All rifles will have been zeroed by a single BBU coach
	13.30	Biathlon	3 x 1km course with 2 visits to the range with penalty loops	Children shoot prone, prone
		Running race starts		
15.30	Prize giving			
16.00	Biathloppet finishes			



British Biathlon Laser Race Series

B2. COMPETITION REGULATIONS

The competitions will be conducted in accordance with the applicable International Biathlon Union (IBU) rules for biathlon races and the International Ski Federation (FIS) rules for Nordic races.

B3. AGE GROUPS FOR CLASSES OF COMPETITORS & ENTRY FEES

There will be various classes of competitors for the biathlon & Nordic races, with male and female fields plus an 'Open' class to recognise the best biathlon performances of the Biathloppet.

Biathlon		Race Fees			Nordic		
BAMBINI	2017 or later	Single race pass	U18/Student	£12:50	U10	2016 or later	
CHILDREN	2012-2016		Adult	£20	U12	2014-2015	
U17	2010-2011	Day pass	U18/Student	£20	U14	2012-2013	
U19	2008-2009		Adult	£30	U16	2010-2011	
U21	2006-2007	Weekend pass	U18/Student	£30	U18	2008-2009	
SENIOR	2005 or earlier		Adult	£50	SENIOR	2007 or earlier	
MASTERS	1986 or earlier	Race insurance	Per pass		£3	VETERAN	1985 or earlier
OPEN	Adjusted for age & gender					SUPER VET	1965 or earlier
PARA	Sitting & Standing				PARA	Sitting & Standing	

B4. EQUIPMENT & CLOTHING

Equipment

Helmet¹, glasses², skate & classic roller-skis³, poles, boots.

There will be a small number of skate roller-skis to loan out for the race if required but prior notice must be given.

No arm cuff for the rifles will be required as rifles will be shot from a resting box in the prone position.

Clothing

Depending on the weather, running-style clothing is appropriate for all races, but beginners are advised to cover as much skin as possible for roller-ski races.



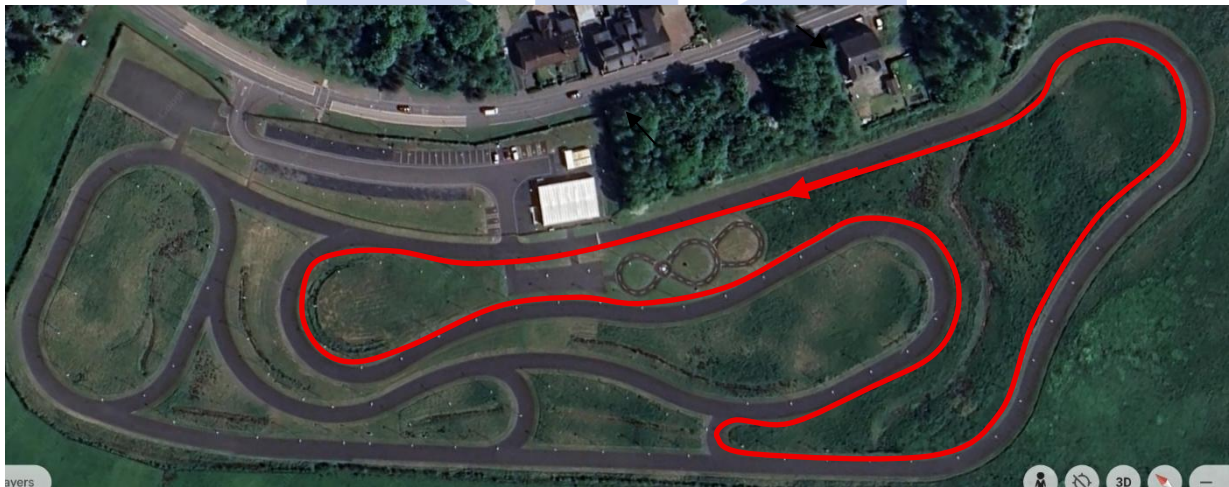
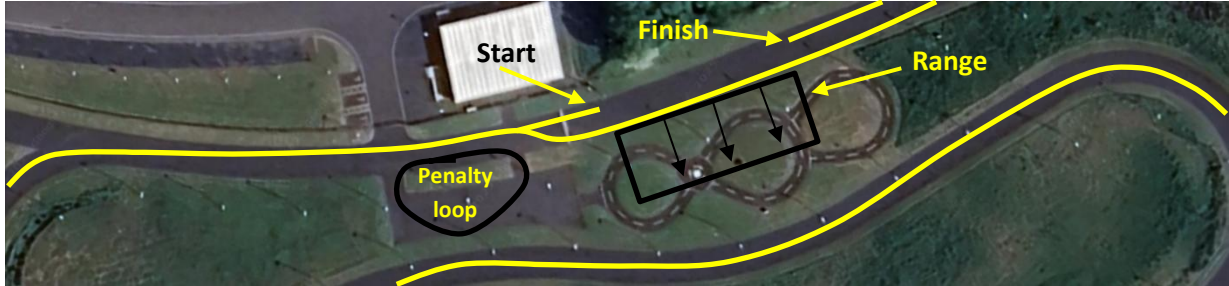
¹ Compulsory for roller-ski races and training periods

² Compulsory for roller-ski races and training periods **unless** weather conditions hinder visibility

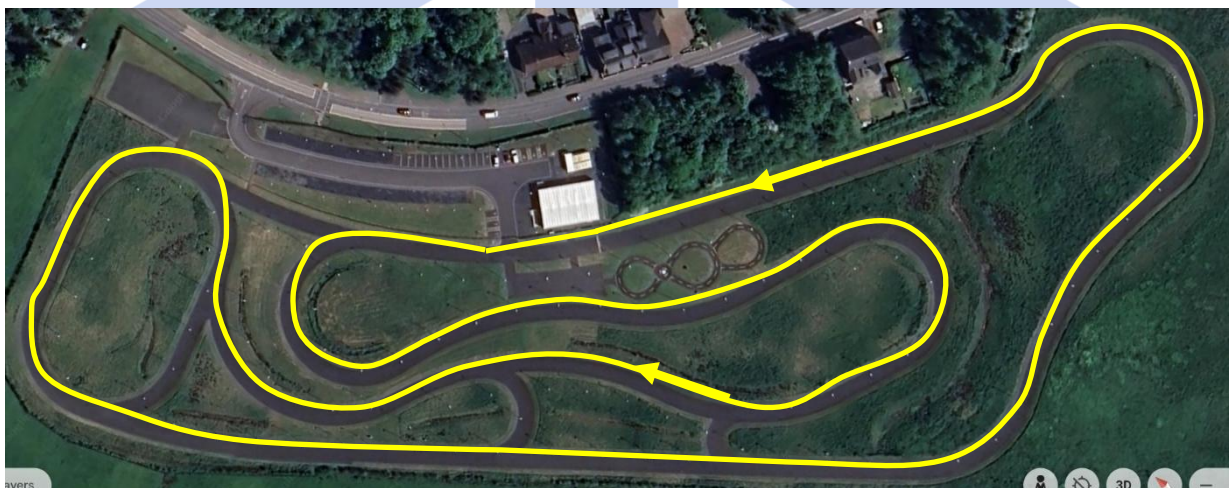
³ Wheels, Skate - no faster US6/#2, Classic - no faster than 6C6/#2 wheels, only rubber training wheels permitted.

B5. STADIUM AND COURSE PLANS

Biathlon Roller-ski Race – 3 x 1km (red loop) with penalty loop



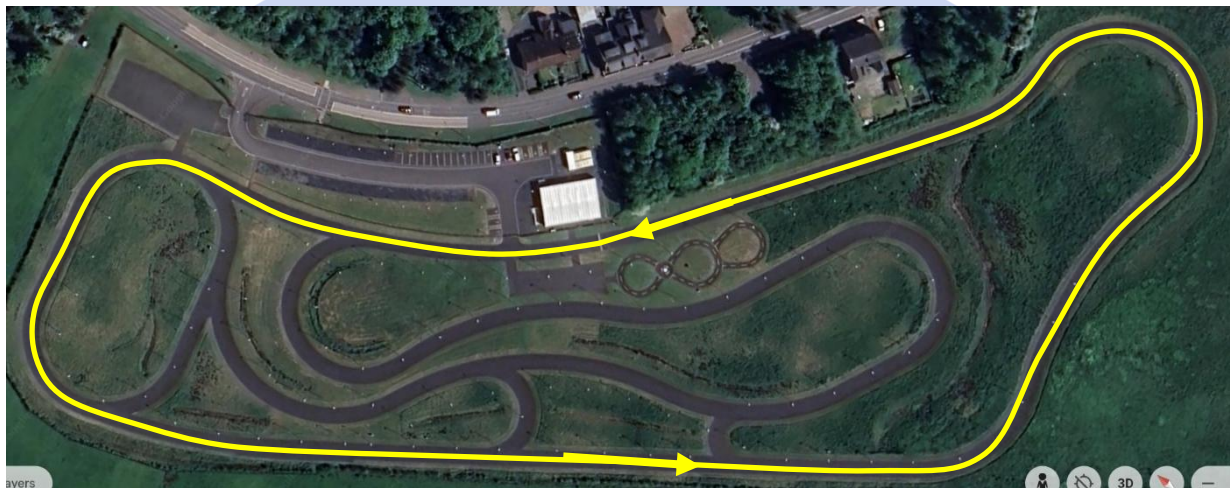
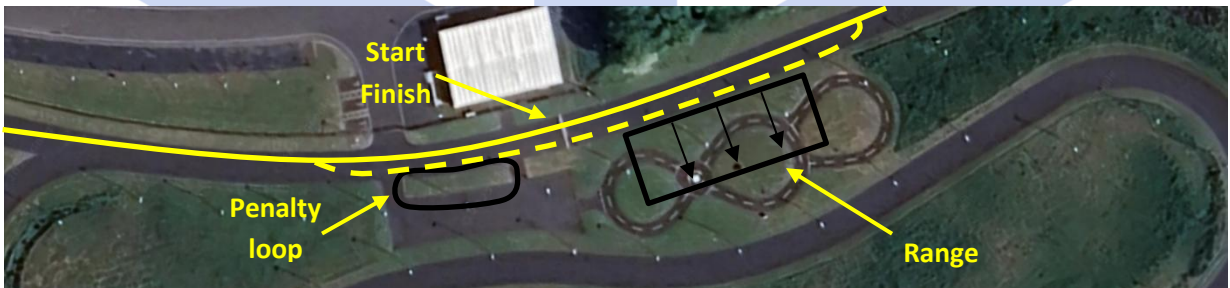
Biathlon Roller-ski Race – 3 x 1.65kms (yellow loop) with penalty loop



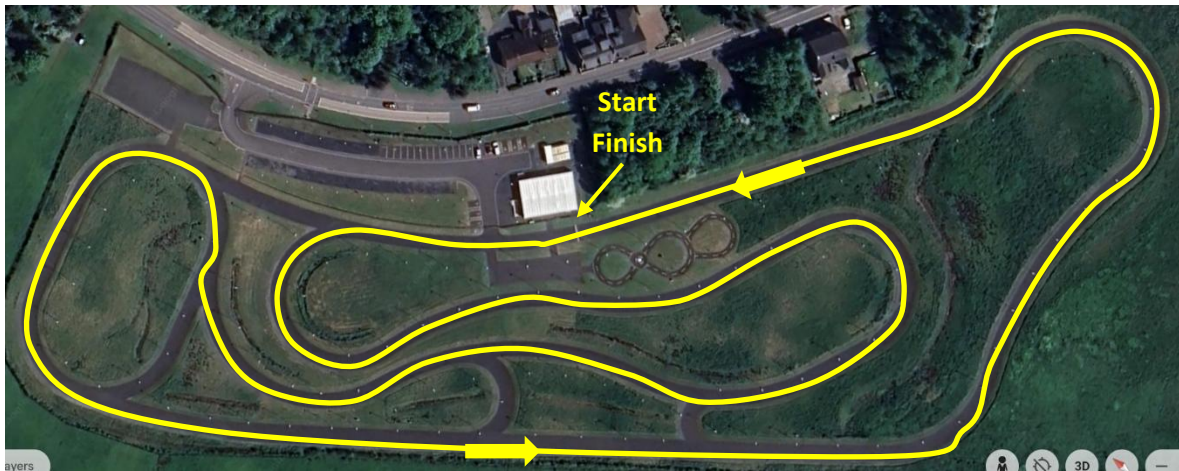
Biathlon Roller-ski Race – 3 x 2.2kms (white loop) with penalty loop



Biathlon Running Race – 3 x 1km with 50m penalty loop



Nordic Classic Time trial Race - 1.65kms



Nordic Pursuit Race - 1.65kms

